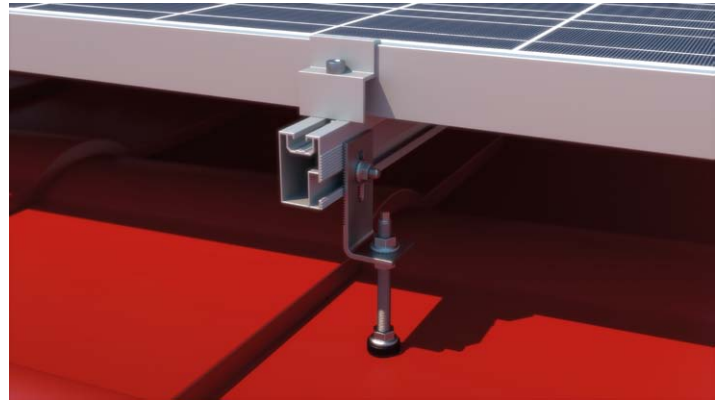


# SYSTEM REM-07 VERTICAL

METAL ROOF / ETERNIT ROOF



**Art. 0109**  
**Mounting Rail**  
 Measurements: 31x50  
 Length: 6200mm, 3100mm, 2070mm  
 Joining screws  
 top: M8  
 side: M8/M10/M12  
 Material: AL 6060T6



**Art. 0121**  
**Hanger Bolt**  
 With nuts and EPDM sealing washer  
 M10 160 ±300  
 M12 200 ±400  
 Use with Art. 0122 or Art. 045  
 Use: metal roof/eternit roof  
 Material: A2 1.4301 stainless steel



**Art. 0129**  
**Hammerhead screws 28/15**  
 Measurements:  
 M8 16 ±70  
 M10 16 ±100  
 Use: Mounting Rail Art. 0110  
 Material: A2 1.4301 stainless steel



**Art. 0134**  
**Hexagon flange nuts with serration**  
 DIN 6923  
 M6  
 M8  
 M10  
 M12  
 Material: 1.4301 A2



**Art. 0132**  
**Hexagon socket cap screws DIN 912**  
 with serration  
 M8 12 ±60  
 Material: A2 1.4301 stainless steel



**Art. 080**  
**T-slot nuts, self aligning with spring ball**  
 M8  
 Used with hexagon socket cap screw  
 Art. 0132  
 Use: for Mounting Rails Art. 0109, Art. 0110, Art. 062, Art. 0111, Art. 0112  
 Material: AL 6060T6



**Art. 0147**  
**Click**  
 M8  
 Material: Aluminium  
 for rails: Art. 0109, Art. 0111



**Art. 073**  
**Middle Clamp**  
 Length: 50mm (standard)  
 Length: 60mm – 100mm  
 Height: 30mm  
 Thickness: 3mm  
 Colors: plain aluminium/black  
 Material: AL 6060T6



**Art. 075**  
**End clamp**  
 Length: 50 (standard)  
 Length: 70mm  
 Height: from 30mm to 50mm  
 Thickness: 3mm  
 Colors: plain aluminium/black  
 Material: AL 6060T6



**Art. 0122**  
**Bracket M10**  
 (X1) Hole M10 or M12  
 (x1) long Hole M8  
 Use with Art. 0121  
 Material: A2 1.4301 stainless steel